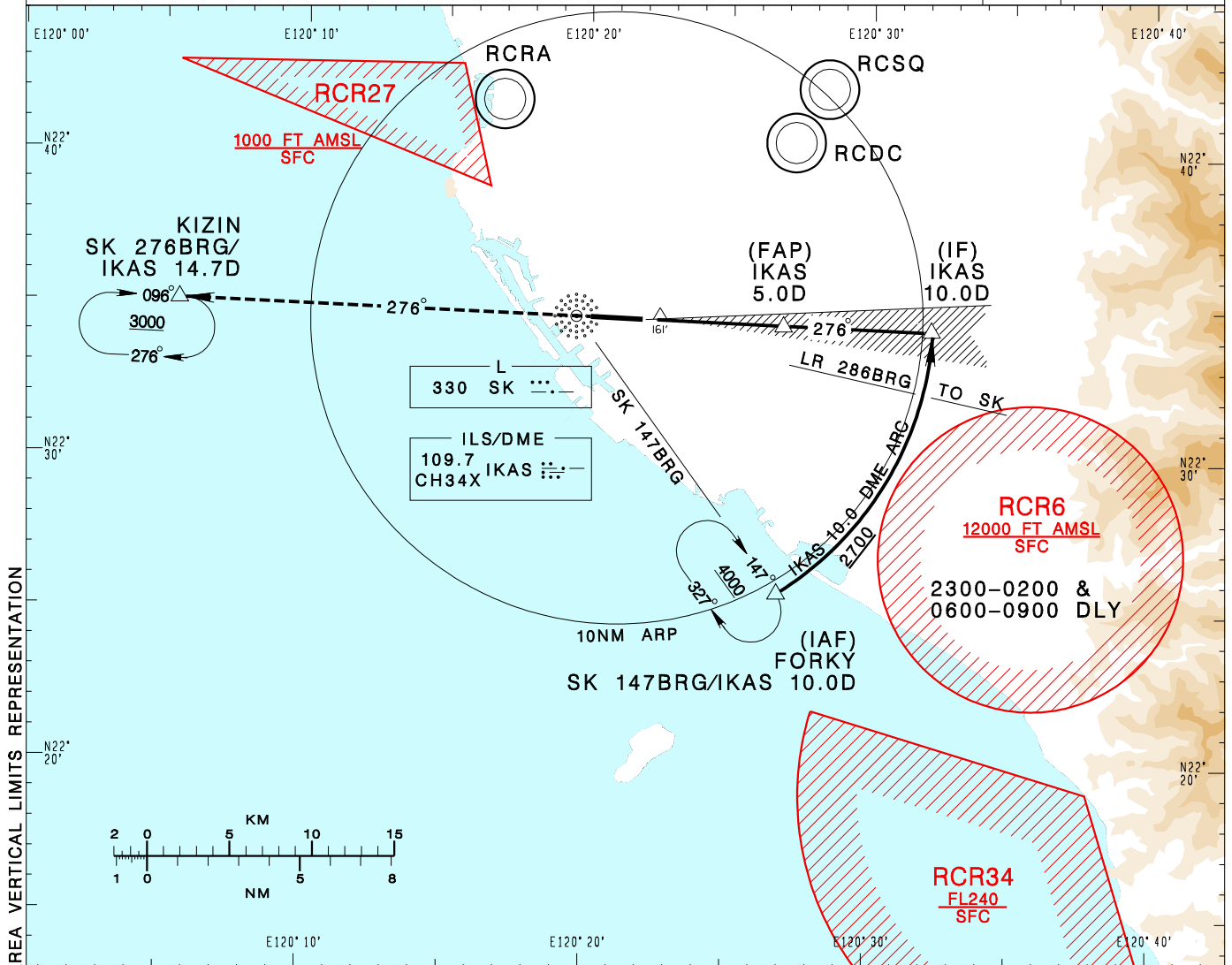
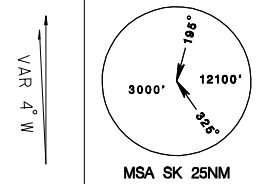


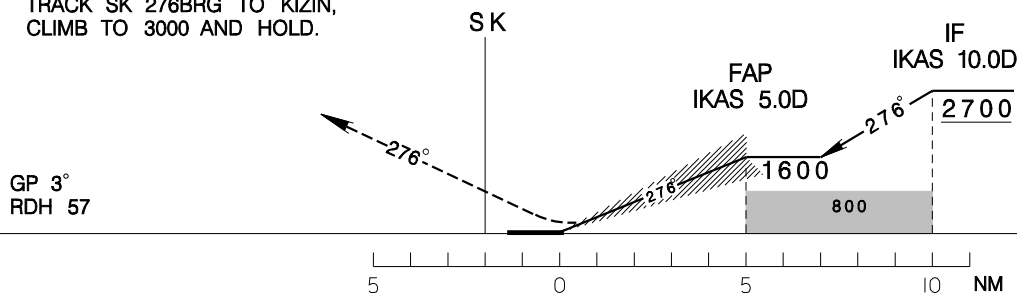
高雄國際機場
KAOHSIUNG INTL AD

RCKH
ILS RWY27

KAOHSIUNG APP 124.7 125.7	KAOHSIUNG TWR 118.7 120.7	ATIS 127.8
Apt Elev: 32'	Rwy27 DTHR Elev: 31'	Trans Level: FL130
Trans Alt: 11,000'		
BEARINGS ARE MAGNETIC; DISTANCES ARE NAUTICAL MILES; ELEVATIONS, HEIGHTS IN FEET		



MISSED APCH:
CLIMB DIRECT TO SK, THEN
TRACK SK 276BRG TO KIZIN,
CLIMB TO 3000 AND HOLD.



MINIMA (OCA IN FT, VIS IN M, OCH IN FT)

CATEGORY	A	B	C	D	NOTE
STRAIGHT IN	293/ 800 RVR750	262/ 305/ 800 RVR750	274/ 313/ 800 RVR750	282/ 324/ 800 RVR750	293
STRAIGHT IN (ALS OUT)	293/ 1300 RVR1400	262/ 305/ 1300 RVR1400	274/ 313/ 1400 RVR1400	282/ 324/ 1400 RVR1400	293

NOTE
1. CIRCLING NOT AUTHORIZED.
2. THE INITIAL APCH ARC INFRINGES
RCR-6 AREA, PRIOR COORDINATION
WITH ROCAF WILL BE COMPLETED BY
ATC BEFORE ISSUING CLEARANCE
DURING RCR-6 ACTIVE HOURS.
* DME REQUIRED